

Classic Rally Club Inc.
Desktop Rally No. 3 April 2010

Author: Ernst & Sonja Luthi

Checker: Gary & Wendy Maher

Official map

Sydney Special 1:250,000 Edition 3

Interpretation of Instructions

Instructions between successive VIA points may be in any order and may be concurrent.
Do not oppose rally traffic at any time during this event

A via point may be visited again without being specified again, but only after visiting it as specified in the route instructions.

Where required not to use part of the course previously used or to avoid a thoroughfare or part thereof then crossing the course or thoroughfare shall not be considered to be in breach of the requirement.

Thoroughfares on a map which have a gap in the line to permit the insertion of a name or symbol are deemed to be continuous through the insertion. Thoroughfares specified as out of bounds may be crossed.

Grid lines are deemed to be North

Proceed using the shortest map route point to point unless otherwise stated.

Note out of bounds

All route markers

Dual Carriage Ways

Yanderra Locality

Driving Instructions

Start is at GR 3139 2439, a cross road closest to Bankstown Airport. Start your engine.

Cross an active 1435mm gauge railway 3 times only to the via point

Leave masts to your left and pass through a mast

Pass through a locality

Stay closest to a 210 spot elevation

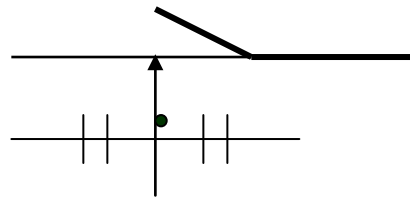
Via: a TJ of a Principle and Secondary road in GS 2721

Pass through a locality

Keep the railway track to your right on the final 12 km of your journey

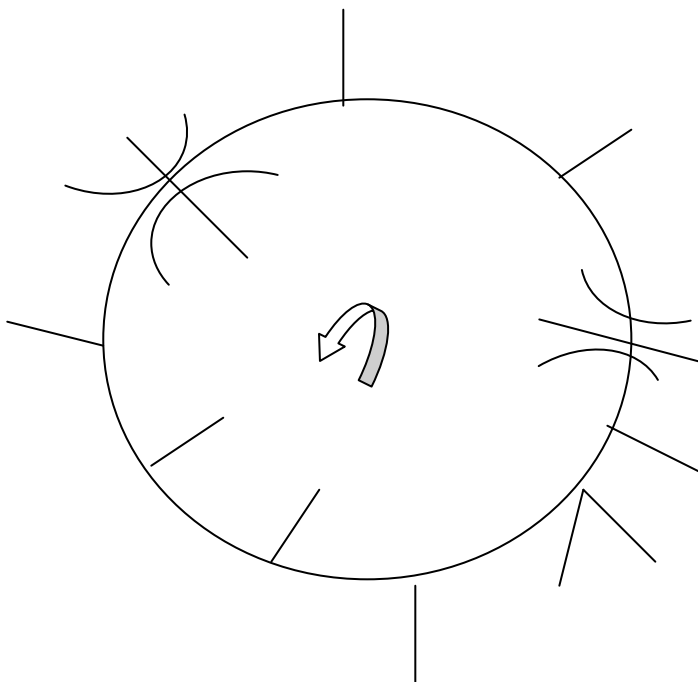
Via: an intersection of Principal and Secondary road defined by the intersection of a line from Berrima and Curra^ucurrang (GS 2518, GS 3221) and a line from New Yards and Milton Park (GS2424, GS2618)

The intersection is deemed to look like this:

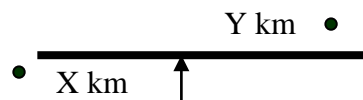


Follow the following circular herringbone

After the herringbone, use only minor and secondary roads to the via



Via a T intersection of a Principal and Minor road located between 2 railway stations 2km and 2.5km from the intersection (within 10km from previous via).



Use less than 2km of a mapped 8km stretch of a Principal Rd

Keep 2 mines to your left (symbol)

Keep an abandoned mine to your right

Via a cross road 1.5km from the centre of The Oaks landing strip, enter from a westerly direction

Use 1.5km of a bridge

Use less than 2km of Camden Valley Way

Drive through a tower

Leave a motor racing circuit to your left

End: a cross road at GR 3139 2439

Reference points

A	Cross road between principle roads and a minor road just south of <u>LIVERPOOL</u>
B	RJ between principle roads north east of <u>LIVERPOOL</u>
C	RJ between minor roads south of <u>LIVERPOOL</u>
D	RJ between principle road and minor road @ GR 3035 2410
E	RJ between minor roads and a powerline north of Minto (GS 3023)
F	RJ between principle and secondary road at Macarthur
G	RJ between two secondary roads west of Appin
H	RJ between minor roads at GR 2931 2125
I	RJ between secondary and minor road at GR 2895 2060
J	RJ between secondary roads south of Maldon
K	RJ between a principle road, a secondary road, a minor road and railway line at Picton
L	RJ between minor roads (sand mining) at GR 2777 2170
M	RJ between minor roads 1 km east of <u>THIRLMERE</u>
N	RJ between 2 minor roads under <u>THIRLMERE</u>
O	RJ between 2 minor roads SE of <u>Mowbray Park</u> (GR2750 2180)
P	RJ between 2 minor roads GR 2745 2180
Q	Locality of Yanderra
R	RJ 2km south of <u>Willow Vale</u>
S	RJ between principle and dual carriage way 2.5km north of <u>Willow Vale</u>
T	RJ between minor roads west of Hilltop Railway Station
U	RJ between minor roads 2.5km from bottom of map in GS 26
V	RJ between secondary and minor roads north of <u>Berrima</u>
W	RJ between minor roads northwest of <u>THE OAKS</u>
X	XR between <u>CAMDEN VALLEY WAY</u> and <u>THE NORTHERN ROAD</u>
Y	RJ between minor roads at the extension of Camden Aerodrome landing strip in north easterly direction
Z	RJ 4km south of <u>Leppington</u>